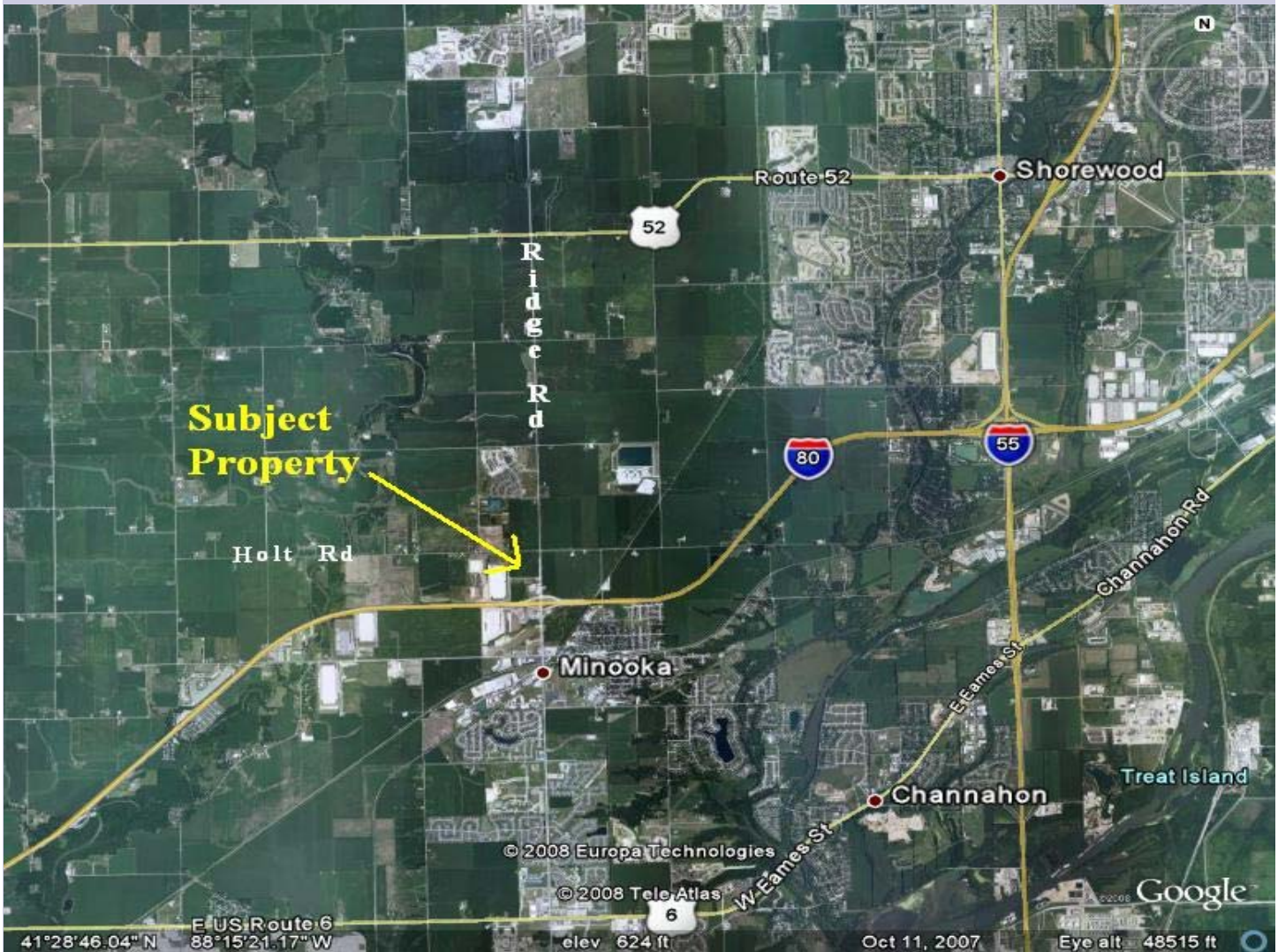


NW Corner Ridge Road & Mid-Point Rd Minooka, IL

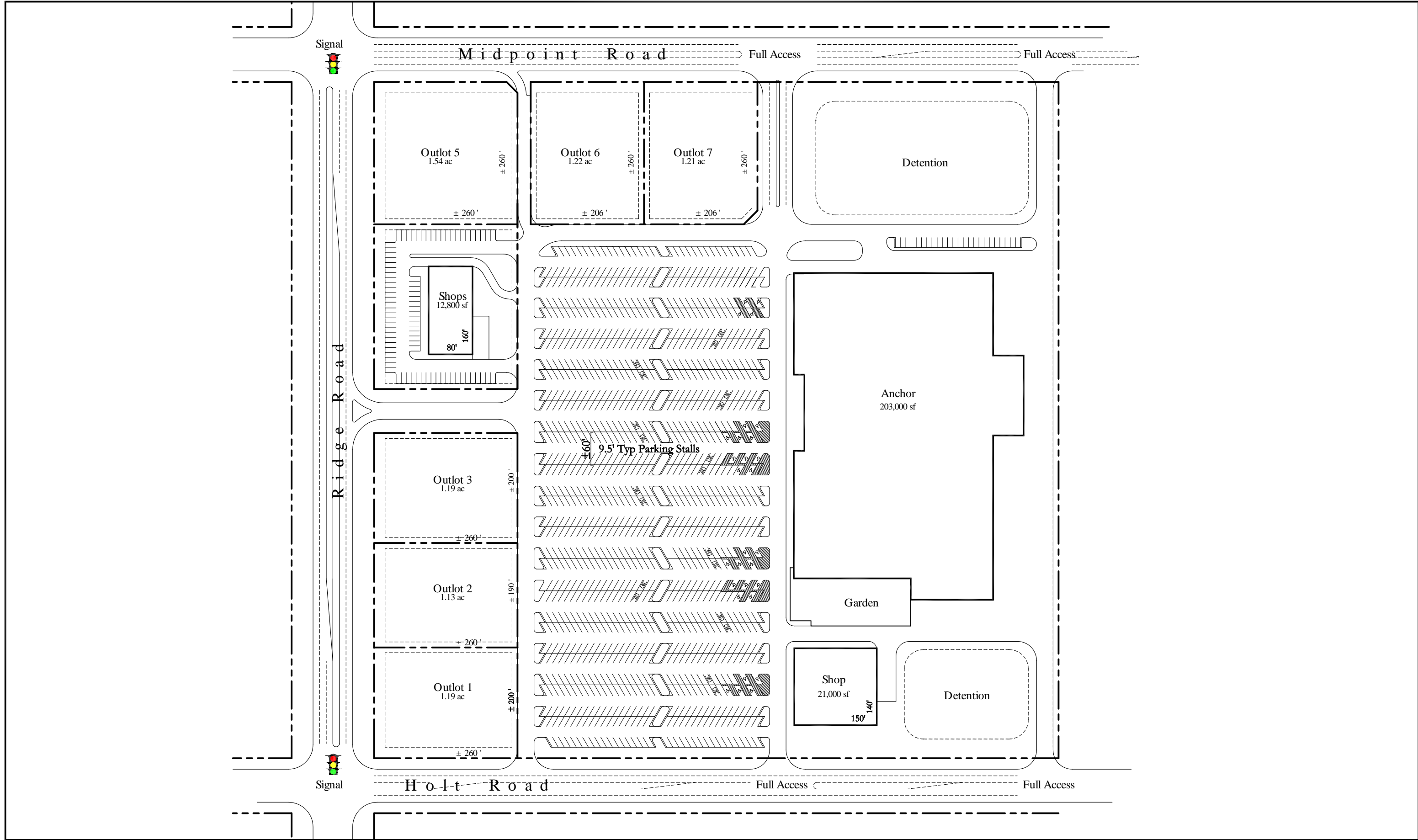


**Marquette
Properties,
Inc.**



Property & Market Highlights

- Subject Property consists of 20 +/- acres at a lighted intersection adjacent to Village of Minooka just north of I-80 exit (May be expanded to 40 +/- acres as seen in Concept Plan)
- All Utilities on or adjacent to site
- List Price: \$3,500,000 or \$4.00 per s/f
- From 2004 through 2006, Minooka & Channahon issued over 1,900 permits for new homes.
- The Ridge Road interchange at I-80 has undergone reconstruction in 2007 which expanded ramps, widened Ridge Road to five lanes and added signalization.
- The Minooka-Channahon market offers a new regional shopping destination over six miles from the Route 59 retail corridor of Shorewood/Joliet and over 10 miles from the Morris exit.



Concept Plan