



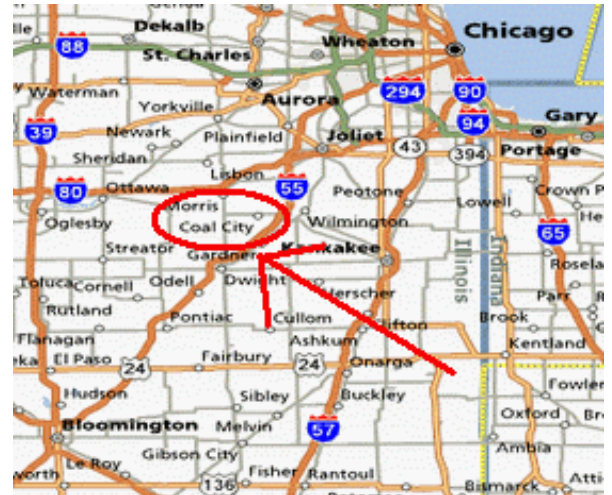
Michael John Fleming

Office: 815-941-0207
Fax: 815-941-4617
Cell: 815-347-5151

Peter Michael Fleming

Office: 815-941-0207
Cell: 773-882-6286
Email: pfleming52@yahoo.com

**For Sale: 1,021 +/- acres
Maine-Braceville Twp – Grundy Cty, IL**



- **1,021 +/- Acres
(May Be Divided)**
- **List Price:
\$12,000 / acre**

- Contiguous to Village of Coal City
- Located near I-55 interchange, BNSF & UP Railroads
- Additional acreage available
- All Buyer Brokers must register clients in writing

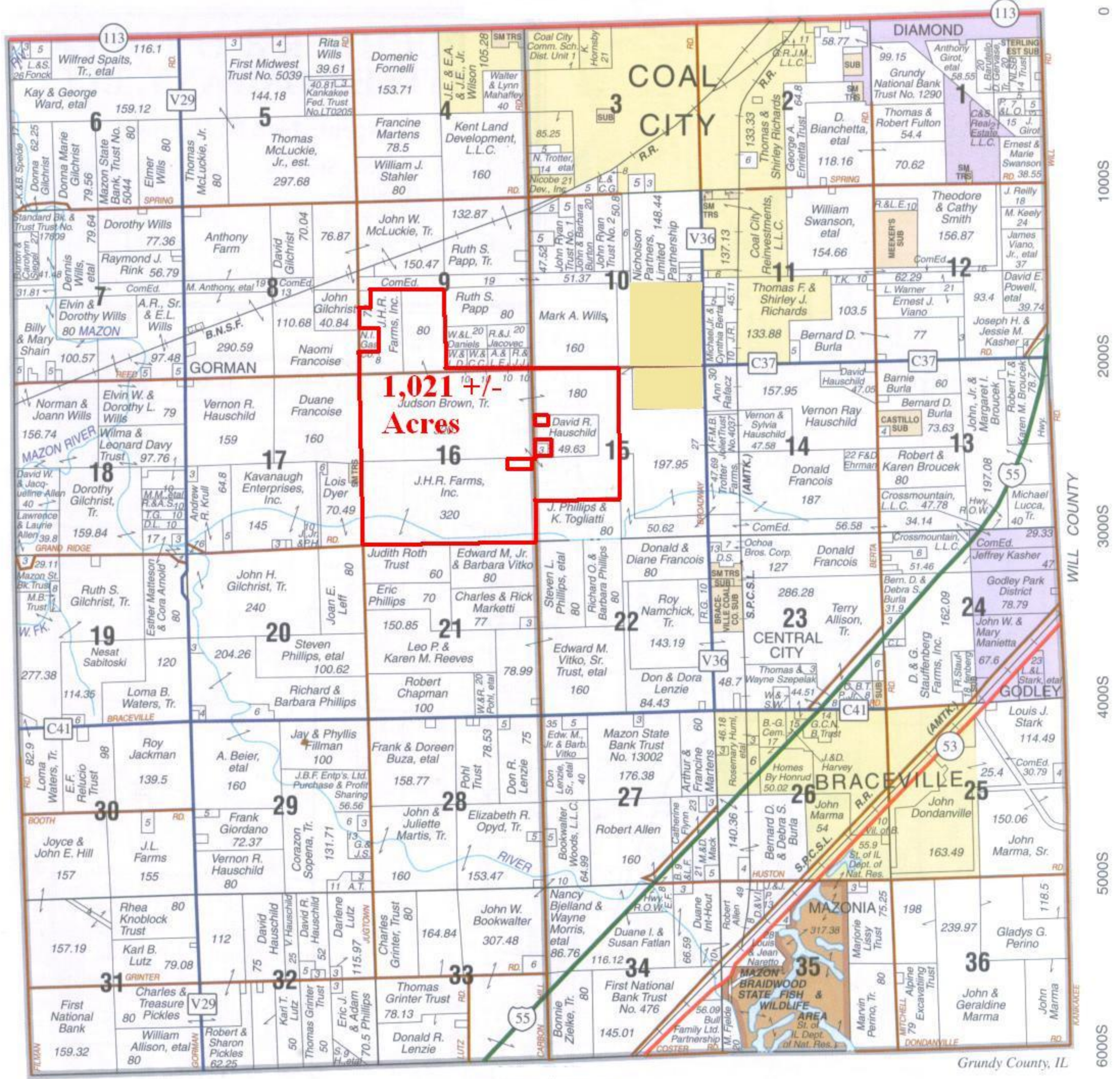
Marquette Properties, Inc.

519 Franklin St., Ste. 102, Morris, IL 60450

www.marquetteproperties.com

MAINE- BRACEVILLE

T.32N.-R.8E.



© 2005 Rockford Map Pubs., Inc. MAINE TWP. ← → BRACEVILLE TWP. 3000E 4000E 5000E 6000E 7000E 8000E 9000E

Grundy County, IL



Michael John Fleming

Office: 815-941-0207
 Fax: 815-941-4617
 Cell: 815-347-5151

Peter Michael Fleming

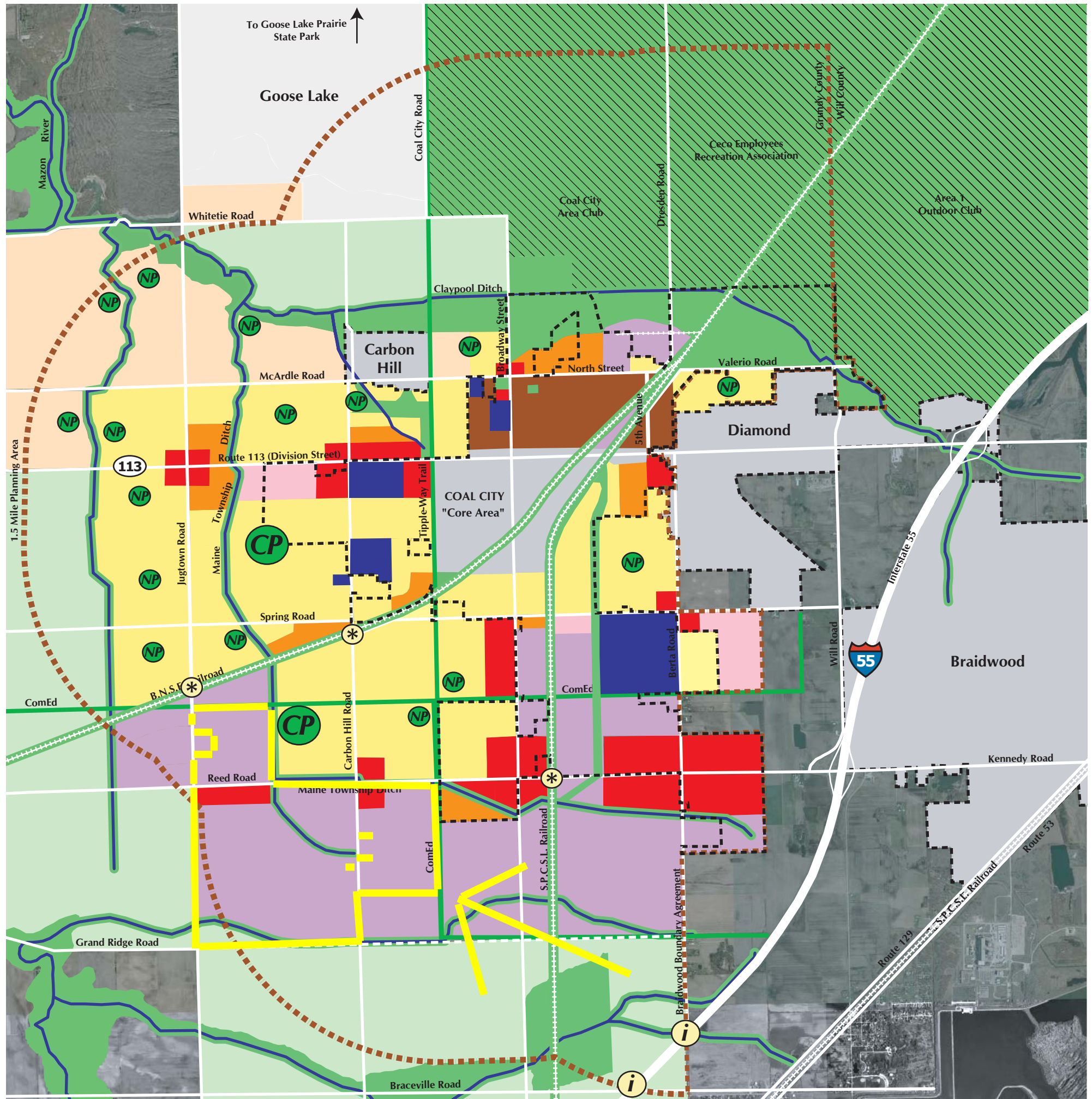
Office: 815-941-0207
 Cell: 773-882-6286
 Email: pfleming52@yahoo.com



Soil Numbers	Soil Name	Acres	Corn	Soybean	Productivity Index
594	Reddick clay loam	70.3	159	51	130
125	Selma loam	51.7	157	51	129
235	Bryce silty clay	50.6	146	49	121
151	Ridgeville fine sandy loam	163.5	136	46	114
184	Roby fine sandy loam	6.2	131	45	111
201	Gilford fine sandy loam	245.03	133	44	110
42	Papineau sandy loam	214.6	124	41	103
98	Ade loamy fine sand	209	122	42	103
88	Sparta loamy fine sand	10.7	107	37	92
Total Acres		1021.63	Avg. P.I.		113

Source: USDA/NRCS Soil Survey of Grundy County & University of Illinois Bulletin 811 Optimum Crop Productivity Ratings for Illinois soils

Marquette Properties, Inc.
 519 Franklin St., Ste. 102, Morris, IL 60450

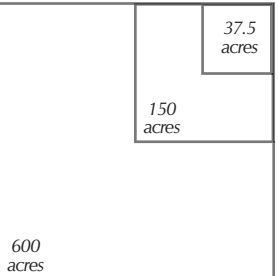


DRAFT FUTURE LAND USE PLAN
 Village of Coal City, Illinois

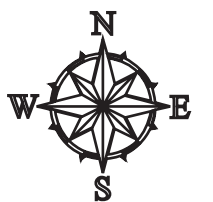


MAP KEY

- Low-Density Residential
- Medium-Density Residential
- High-Density Residential
- Village Residential
- Commercial
- Commercial / Office Park
- Light Industrial / Business Park
- Municipal / Institutional
- Open Space (Private)
- Open Space / Parks (Public)
- Agricultural
- Waterway
- Municipal Boundary
- Planning Area Boundary
- Roads
- Proposed Roadway
- Railroads
- Potential Interchange
- Potential Grade Separated Crossing
- Future Neighborhood Park
- Future Community Park



Acreage Scale





- Union Pacific Railroad
- ⋯ Union Pacific via Haulage or Trackage Rights

Seattle

Spokane

Eastport

Portland

Eugene

Hinkle

Pocatello

Ogden

Reno

Roseville

Stockton

Fresno

Oakland

San Francisco

Las Vegas

Los Angeles

Long Beach

Colton

Phoenix

Calexico

Tucson

Nogales

Denver

Cheyenne

North Platte

Minneapolis/
St. Paul

Duluth

Milwaukee

Chicago

Des Moines

Omaha

Denver

Topeka

Kansas City

St. Louis

Wichita

Oklahoma City

Amarillo

Lubbock

Memphis

Little Rock

Pine Bluff

Texarkana

Dallas

Shreveport

Ft. Worth

Livonia

San Antonio

Houston

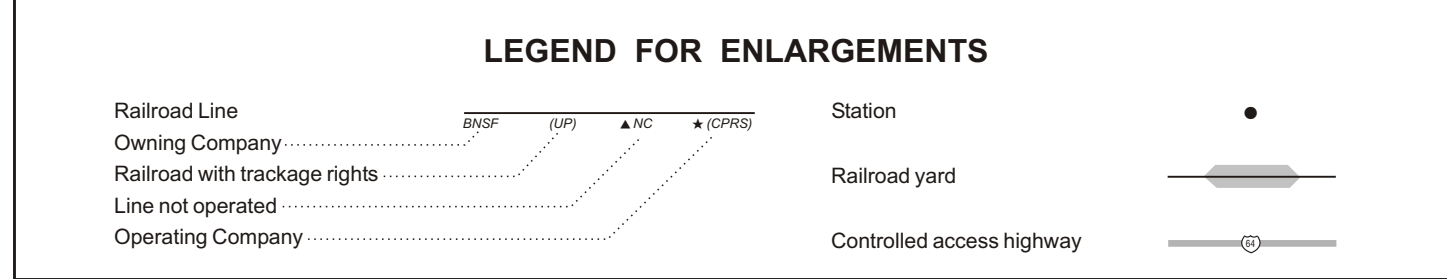
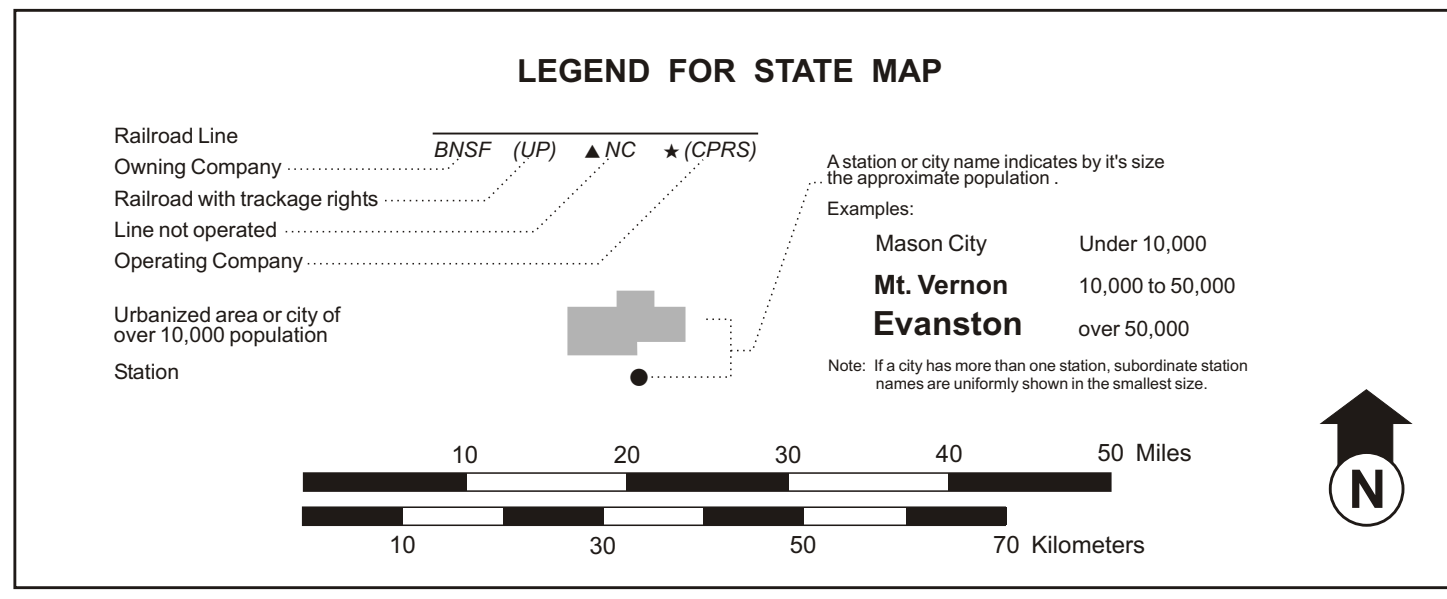
New Orleans

Eagle Pass

Laredo

Brownsville

ILLINOIS RAILROAD MAP



January, 2006

RAILROADS

Algonquin and Western Ry. Co.	AJWW	Indiana Southern Railroad	ISRR
Alton and Southern Ry. Co.	ALS	Indiana Southwestern Ry. Co.	ISW
Baltimore and Ohio Chicago Terminal RR. Co.	BOCT	Iowa, Chicago & Eastern RR.	ICE
Beaumont Railroad	BEA	Iowa Interstate RR. Ltd.	IACS
Beaumont and Chicago Terminal RR. Co.	BRCC	Iowa Northern Ry.	INNR
Bloomington and Chicago Terminal RR. Co.	BLCC	J. & J. Ry. Co.	J&J
Bloomington Northern Santa Fe	BNSF	J. K. L. Ry.	JKL
Carlin Terminal RR. Co.	CTNL	Joplin and Eastern RR.	JE
Canadian National	CN	Kankakee, DeWittville and Southern RR. Co.	KBSR
Central Railroad of Iowa City Ry. Co.	CIC	Kansas City Southern Ry.	KCS
Central Illinois RR. Co.	CIRY	Kaskaskia Regional Port District RR.	KKRX
Central Railroad of Indianapolis	CERA	Kankakee Junction Ry.	KJR
Chesapeake and Indiana RR. Co.	CKIN	Kewanee RR. Inc.	KEWA
Chicago and Western Indiana RR. Co.	CWI	K. W. T. Ry. Co.	KWRT
Chicago-Chemung RR. Co.	CCRC	Lincoln and Southern RR. Co.	LS
Chicago, Ft. Wayne and Eastern RR.	CFER	Manufacturers' Junction Ry. Co.	MJ
Chicago Heights Terminal Transfer Co.	CHTT	Manufacturers' Railway Co.	MFRS
Chicago Rail Link	CHL	Municipality of East Troy Wisconsin RR.	METW
Chicago Short Line Ry. Co.	CSL	National Railroad Passenger Corp. (AMTRAK)	AMTK
Chicago South Shore and South Bend RR.	CSBR	Norfolk Broad Ry. Corp. (METRA)	NBR
Chicago, Central & Pacific RR. Co.	CC	Norfolk Southern	NS
Chicago, West Palmer & Southern RR. Co.	CWPS	Paducah & Illinois RR. Co.	PI
C. P. Rail System	CPSS	Paducah & Louisville Ry. Inc.	PAL
Carle Chemical & Egyptian RR.	CCER	Panama and Peñon Union Ry. Co.	PUU
CSX Transportation, Inc.	CSXT	Pioneer Industrial Ry. Co.	PIRY
Central Railroad of Iowa City Ry. Co.	CIC	Pennsylvania & Overland Railroad Co.	PO
Dubuque County Railroad	DCR	R. J. Corman RR. Co.	RJCR
East St. Louis Junction RR. Company	ESLJ	St. Louis, Iron Mt. & Southern Railway	SLIS
Eastern Illinois RR. Co.	EIR	Shawnee Terminal Ry. Co.	STR
Elgin, Joplin and Eastern Ry. Co.	EJR	Shelbyville Industrial Rail Spur	SIS
Elkhart and Western RR.	EWR	Shelbyville and Poca RR.	SP
Evansville Western Railway	EVWR	Tenneco RR. Co.	TEN
Ferdinand & Huntington RR.	FRDN	Tenneco RR. Association of St. Louis	TTRA
Fox Valley and Western RR. Ltd.	FVW	Terra Haute, Brazil and Eastern RR. Co.	TBEW
Fuller County RR. Inc.	FCRR	Toledo, Peoria and Western Ry. Corp.	TPW
Gateway Eastern Ry.	GEWR	Union Pacific RR.	UP
Golden Gate RR. Corp.	GGRC	Vandalia RR. Co.	VVRC
Hooch Southern RR.	HOS	Wabash & Erie Railroad	WABE
Illinois Midland Railway	IM	Wyannee Southern Railroad	WSR
Illinois Railnet	IR	Wisconsin & Southern RR. Co.	WSOR
Indiana Harbor Belt RR. Co.	IHR	Yankin Down Corp.	YDC
Indiana Rail Road Co.	INRD		

